

Case Studies in Anthropology

Culture Sketches

CULTURE SKETCHES: CASE STUDIES IN ANTHROPOLOGY

Published by McGraw-Hill, an imprint of The McGraw-Hill Companies, Inc. 1221 Avenue of the Americas, New York, NY, 10020. Copyright © 2002, 1997, 1994 by The McGraw-Hill companies, Inc. All rights reserved. No part of this publication may be reproduced or distributed in any form or by any means, or stored in a database or retrieval system, without the prior written consent of The McGraw-Hill Companies, Inc., including, but not limited to, in any network or other electronic storage or transmission, or broadcast for distance learning. Some ancillaries, including electronic and print components, may not be available to customers outside the United States.

This book is printed on acid-free paper.
1 2 3 4 5 6 7 8 9 0 FGR/FG 0 9 8 7 6 5 4 3 2 1

ISBN 0-07-228598-2

Editorial director: Phillip A. Butcher

Senior sponsoring editor: Carolyn Henderson

Marketing manager II: Leslie A. Kraham

Project manager: Natalie J. Ruffatto

Production supervisor: Carol A. Bielski

Media producer: Shannon Rider

Coordinator freelance design: Artemio Ortiz Jr.

Photo research coordinator: Judy Kausal

Cover design: Adam Rooke

Interior design: Artemio Ortiz

Typeset: 10/12 Palatino

Composer: Shepherd Incorporated

Printer: Quebecor World Fairfield Inc.

Photo Credits

Page 4: © Betty Press / Panos Pictures; Page 25: © John Neubauer / Photo Edit; Page 42: © GLOBALPHOTO; Page 63: © Rob Hubers / Panos Pictures; Page 80: © Ramney / Photo Edit, Inc.; Page 101: © Art Wolfe / Photo Researchers, Inc.; Page 119: © World Images News Service; Page 135: © World Images News Service; Page 158: © Lisa Klopfer; Page 170: © Hulton-Deutsch Collection / CORBIS; Page 186: © C. Brill; Page 198: © Per Andersen; Page 217: © Ludo Kuipers; Page 233: © Chris Rainer / CORBIS; Page 252: © Jerry Callow / Panos Pictures

Library of Congress Cataloging-in-Publication Data

Peters-Golden, Holly.
Culture sketches: case studies in anthropology / Holly Peters-Golden. — 3rd ed.
p. cm.
Includes bibliographical references.

1. Ethnology—Cases studies. I. Title
ISBN 0-07-228598-2 (alk. paper)

GN378.P47 2002

305.8—dc21 2001030590

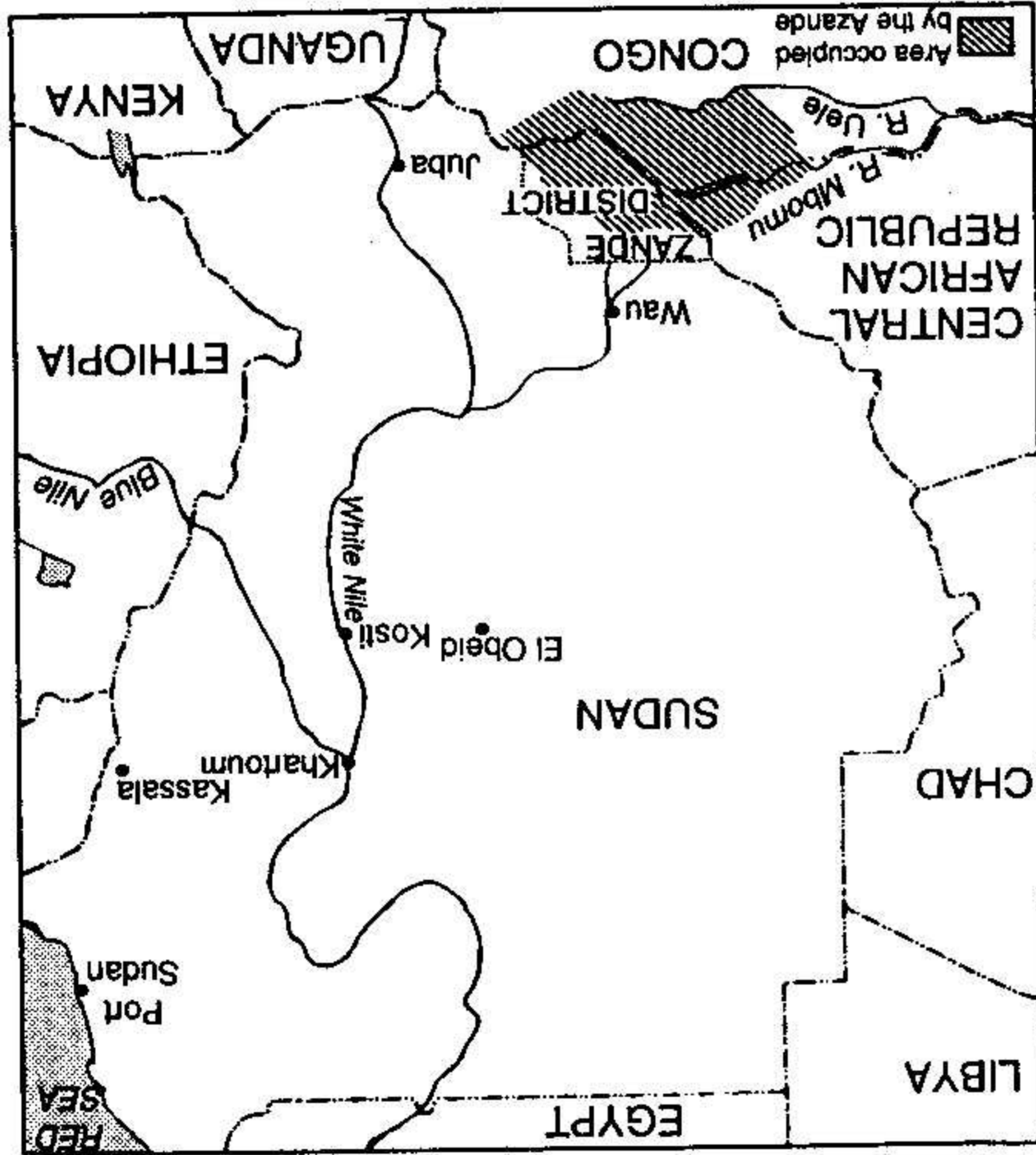
www.mhhe.com

The Azande people live in a large area in the center of Africa, in the south-western Sudan, north of Zaire and to the east of the Central African Republic. Sudan is Africa's largest country, measuring roughly a quarter the size of the United States. This is an area of rolling hills with abundant rivers and streams.

Introduction and History

There are those who can set broken bones. Only they, and people healed by them, can do this. The first of them long ago fathered a child, and the child had no arms and no legs. He was round, like a cooking pot. People saw him and knew he was a child of Mbori, the supreme being. The ancestor had a dream. In the dream he was told to burn the child, and this he did. He was told to take the child's ashes and mix them with oil; this he could use to heal broken limbs. The ancestor did all he was told to do. He used the ashes of the child born with no limbs and created the clan of those who can heal the broken limbs of others.

The Beginning



Witchcraft and Oracles in Africa

The Azande

On the banks of the waters grow tall trees, which provide shade in which to build homesteads. However, Azande fell victim to sleeping sickness spread by the tse-tse fly, which breeds in thick bush. Sudanese authorities, concerned about this exposure, forced them to relocate to concentrated settlements near roads. (The closeness of the houses in these new settlements was especially problematic. Formerly, structures along the river banks could be spread far apart; this was preferable to the Azande, who feared neighbors' potential witchcraft, which was only effective at close range.)

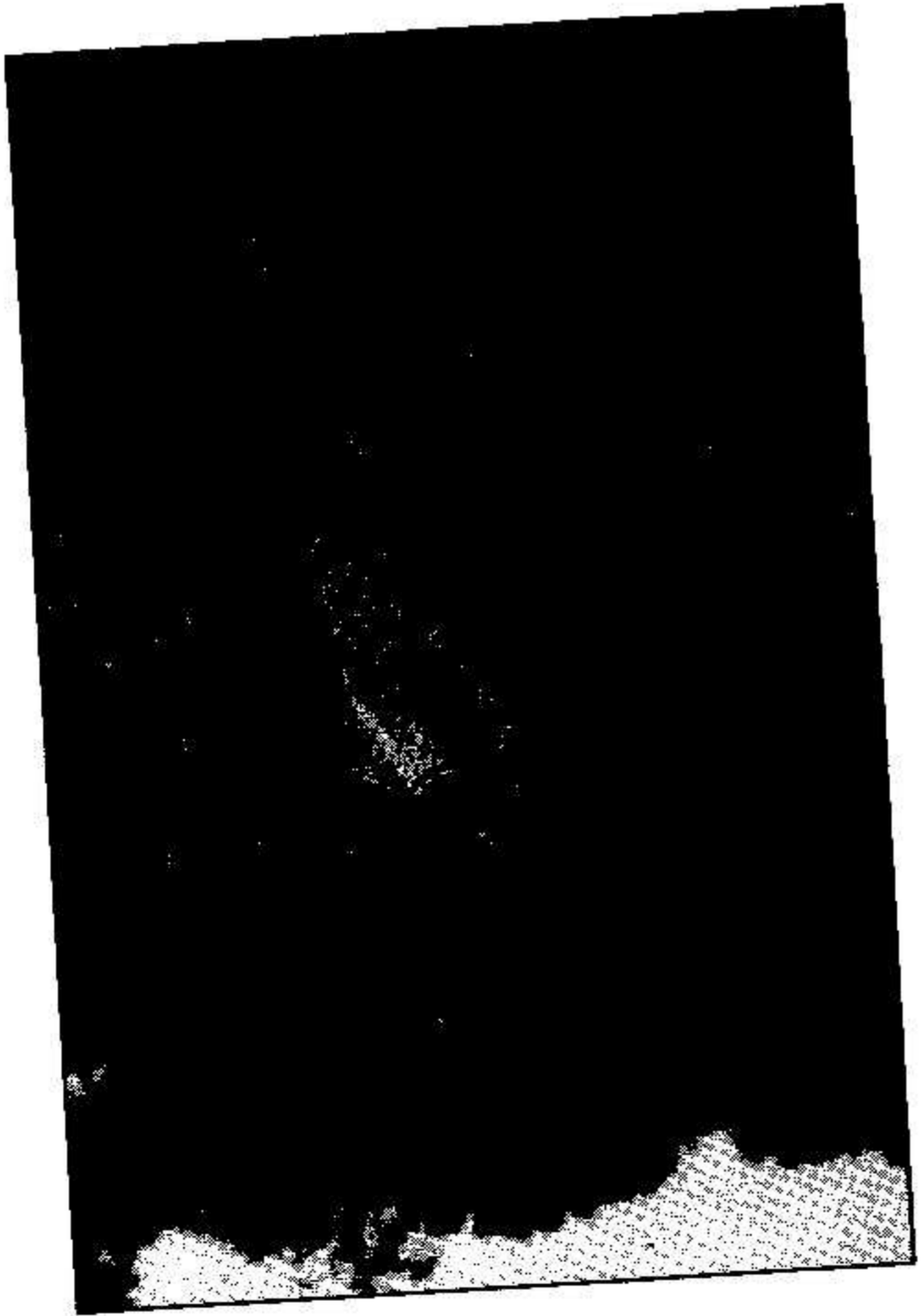
The peoples known collectively as the Azande are a melding together of what were separate clans in the past. In earliest times, the clans who lived along the banks of the waters were autonomous local groups. Clan disputes were settled within the families of which they were comprised. Disputes between clans were settled by elders from each. Azande history tells of a single individual who, through his wisdom and kindness, gained power within his own clan, the Avongara. Soon, under his able leadership, it became the dominant group.

Moving eastward along the riverbanks, the Avongara conquered more than fifty other clans, and eventually amalgamated into one Azande group. The history of the area is characterized by such invasions and warfare. (Reining 1966) In the late nineteenth century, French and Belgian expeditions had set up military outposts in the Sudan; by the early twentieth century the Azande district was under British rule, which lasted until 1953. In that year, growing Sudanese nationalism led to Britain's granting of self-government. Sudan claimed independence in 1956, setting into motion a succession of unstable parliamentary governments and military regimes. Fundamentalist Islamic law was instituted in 1983, and was followed by a series of civil wars among Sudanese of varying religious, ethnic, and political allegiances.

Settlements

Traditionally, the individual homestead of each couple and their children is the focus of the economic system. The construction and maintenance of homes are constant occupations, especially owing to the toll taken on them by weather, insects, animals, and fast-growing vegetation.

Homes are built of mud and grass and framed on wooden poles and thatched with grass. (One addition to traditional Azande homes is the European introduction of doors fitted with hinges and locks.) In addition to this living space, each household unit has a granary for storing millet. Houses are built around courtyards, which provide ideal places for gathering and conversation. These enclosed courtyards are seen as a window into the household life. Their upkeep is critical since they are seen as evidence of the responsibility or industriousness of their owners. Reining (1966:69) reports that his Azande informant would comment on the state of disrepair of their neighbor's homestead, and "analyzed courtyards as reflections of the inhabitants." They did not exempt themselves from such scrutiny; he continues: "I received a number of apologies from the heads of households about the state of their courtyards,



collected the fish, snakes, and crustaceans that remained. Termites were a favorite food, and their high fat and protein content made them a nutritious part of the diet.

In pre-European days, each family was an independent unit of production. Iron tools and spears were used as bridewealth items, but in general there was no tradition of exchange between households, which consisted of a wife or wives, husband, their children, and other dependents (such as widowed elderly). There was a sexual division of labor, and both women's and men's work were necessary to maintain an efficiently functioning household. Construction and repair of the house and granary were the responsibility of men. The arduous task of maintaining the courtyard and its gardens fell solely to women. Wealth, possessed mainly by chiefs, was primarily in the form of foodstuffs; the tradition of destroying a person's worldly goods upon death left little chance of inheritance of property.

Azande have no tradition of occupational specialization. All manufacturing and craftwork were considered largely avocations, done by most. Woodworking and pottery, making nets and baskets, and crafting clothing out of bark were the most important of these skills.

Social and Political Organization

Kinship

Among the Azande, clan affiliation was not stressed at the local level. E. E. Evans-Pritchard (1971), the ethnographer most responsible for knowledge about the Azande, found, as he endeavored to gather genealogies, that "except in the royal

clan, genealogical relationships between clansmen were very seldom known and usually quite untraceable" (p. 14). Local groups, according to Evans-Pritchard, are, in essence, political units. He reports that his discovering members of the same clan living near one another is due as much to chance as anything else.

Chieftoms

In pre-European times, the Azande were organized into a number of chiefdoms (sometimes called kingdoms), each of which was independent from the other. The Avongara were nobility; in these days of Azande chiefdoms, it was to Avongara lineages that chiefs belonged. Despite the fact that chiefs of differing groups all belonged to the same clan, there was ongoing hostility and warfare between them. Chiefs ruled their lands and peoples by appointing emissaries (usually sons, but always Avongara) who were sent out to manage various sections of their territories. Within these communities, commoners were deputized to aid in administration.

Chiefs functioned as military leaders, economic leaders, and political leaders. Unmarried men were recruited into groups that functioned both as warriors and laborers on the king's lands. The governors of the territories had gardens which were also worked by these troops. Both governors and chiefs collected food from the peoples in their domain (provincial governors sending to the chief a portion of their tribute as well) to be redistributed. In addition to food, spears and other items (often payment for fines or bridewealth) were redistributed by the chiefs.

Warfare

Several miles of unsettled forest and bush were maintained among chiefdoms. Watch was kept on these borders by trusted sentinels who were designated to build their houses along these boundaries.

During the rainy season when grass grew tall and provided good cover, surprise attacks were made on these border sentries, usually ordered by the provincial leader. He undertook this action on his own, without permission granted from the chief. Counsel, however, was sought from a poison oracle, a process wherein poison is administered to an animal while questions are posed to the inhabiting spirit. The poisoned animal's behavior, as well as the point at which it succumbed to the poison, were interpreted by those with such skills. Information was obtained concerning the most propitious days and place for the raid, the expected level of casualties, and which companies of warriors should be entrusted with the most dangerous duties. If the oracle indicated that the time was not right for victory, the plans were abandoned.

The oracle also designated a suitable time and place for the attack, and the proper individual to act as a spy. This individual was sent to report on as many aspects of the homestead to be raided as he could determine. Often the spy went under the pretense of visiting a relative or wishing to trade. The best time for a raid was on a feast day when men would be involved in the festivities, not likely to be armed, and quite likely to be drunk. To determine the exact day of

el. E. B. Evans-
dge about the
pt in the royal

of production.
there was no
wife or wives,
lderly). There
ere necessary
repair of the
k of maintain-
essed mainly
stroying a per-
property.
l manufactur-
most. Wood-
othing out of

nites were a
a nutritious

the feast, the spy would plan his visit during the preparations for the festivities. Because beer was always brewed for the celebration, the spy could determine the feast day based on the stage of the brewing process.

A successful raid yielded tools, arms, food, and chickens, some of which were sent to the chief for redistribution. Whatever could not be carried off was destroyed. Huts and granaries were burned.

In addition to raids, there were larger mobilizations of war campaigns on a grand scale. These were ordered by the chief, after having consulted his own poison oracle, and might continue over a period of weeks. While knives and spears were used exclusively in raids, the introduction of rifles into these larger confrontations resulted in a shift from hand-to-hand combat to shots being fired from a distance. Only when ammunition was exhausted would those warriors yielding spears converge on the enemy.

Marriage

The traditional Azande system of marriage was greatly disrupted by European involvement. Administrators legislated broad changes, especially regarding bride payment, divorce, and age at marriage. Although many of these were ostensibly designed to improve the status of women, ethnographer Reining (1966:61-2) regards them rather as "an experiment in altering some aspects of a culture without providing for changes in values. . . . [Illustrating] the unpredictability of arbitrary cultural changes." Azande did not share the European view that marriage was especially disadvantageous to women, whom they never regarded as servile, despite administrative interpretation of their customs.

Traditionally, the instigation for marriage among the Azande came from the potential groom. When a man wanted to marry a woman, he asked an intermediary to approach her father with his offer. Unless the suitor was deemed undesirable immediately, her father would discuss the matter first with his brothers and sisters, and next with the woman in question. If she was agreeable, the money sent with the intermediary was accepted.

Several days later, the suitor would visit his promised bride's parent, bringing gifts, and demonstrating his respect. In turn, their daughter visited her suitor's home for a "trial period" of several weeks, after which she returned to her parents home to make her final decision regarding the marriage.

During the time spent in reflection by the woman, the groom-to-be consulted oracles to determine whether the marriage, should it occur, would be a happy one. If both oracle and woman regarded the match favorably, the bride's family traveled to the home of the groom, where the ceremony took place. The marriage was sealed with the installation of the new bride's own cooking hearth.

Reining (1966) describes traditional Zande marriage as a process which continues indefinitely over time, with a protracted payment of brideprice. A small part of the price was paid at the time of the marriage ceremony, but in reality a husband was always indebted to his wife's family. It was always his

responsibility to help in his in-laws' fields, and he had mortuary obligations in the event of a death in his wife's family.

The material payment of the agreed-upon brideprice was not, in fact, as important as the attitude and behavior of a husband to his wife and her parents. (Reining 1966) If he was a gentle, loving husband and labored adequately for her parents, remuneration could be forestalled for years. This was often, in reality, the situation preferred by in-laws: it afforded them considerable influence over their daughter's husband. If the husband was not performing his duties adequately, the wife's parents might insist that their daughter move back to their home, forcing the husband to negotiate with her parents for her return. Thus, the relationship of primary emphasis in marriage was that of a son-in-law and his wife's parents. In polygynous situations, a man who had a good relationship with his in-laws often expressed the desire to marry his wife's sister because of the advantages of a good relationship with in-laws.

The topic of homosexuality in Azande culture has been regularly addressed, especially in the context of the unmarried warriors, who, during the several years spent living apart from women, had homosexual relations with the boys who were apprentice warriors. These practices, however, were not necessarily maintained as a lifelong pattern of sexual orientation. Generally, after their experiences with so-called "boy-wives," the warriors entered into heterosexual marriages.

Less attention has been paid to Azande lesbianism, relationships that were often formed between co-wives. Although there is not a wealth of information concerning these practices, according to Evans-Pritchard (1970:1429), "All Azande I have known well enough to discuss this matter have asserted . . . that female homosexuality . . . was practiced in polygamous homes."

Azande husbands felt threatened by such activities, yet could not stop them; thus, women usually kept the sexual nature of their friendships secret. (Blackwood in Suggs and Miracle 1993) Two Azande women who wished to formalize their relationship could do so in a ritual that created a permanent bond. (Evans-Pritchard 1970) In addition to assuring both the emotional and economic support of the partner, it has been suggested that this formalization (a ritual akin to Azande "blood brotherhood") may have both widened a woman's trade network and enhanced her position in the community. Blackwood (in Suggs and Miracle 1993) interprets these relationships as indicating that Azande men's control over women did not extend into the realm of activities between women.

Religion, Beliefs, and Expressive Culture

Missionaries settled in the Sudan beginning in the early part of the twentieth century, and attempted to draw on indigenous beliefs as a way to promote Christianity. Mbori is defined by Evans-Pritchard (1937:11) as "a ghostly being to whom the creation of the world is attributed." Missionaries and government officials

he festivities. ld determine me of which rried off was mpaigns on a lited his own e knives and o these larger) shots being uld those war- by European lly regarding of these were ipher Reining me aspects of astrating] the are the Euro- omen, whom ation of their de came from asked an inter- r was deemed first with his he was agree- parent, bring- ter visited her he returned to tage. om-to-be con- ur, would be a bly, the bride's ook place. The own cooking process which f brideprice. A remony, but in was always his

writing about the Azande attempted to create out of Mbori a deity that would fit their own tradition. Evans-Pritchard, however, warns against looking for religion, as organized elsewhere, in Azande culture. Mbori is not convincingly portrayed by the Azande as a god analogous to the supreme being as found elsewhere. They have no shrines to Mbori, and no materials used in worship. There is only one ceremony in which his name is invoked, and that is performed infrequently at best. When he attempted to pursue the topic of theology, and Mbori in particular, Evans-Pritchard found the Azande "bored by the subject . . . and unable to express more than the vaguest ideas about him."

The Trickster Tales |

One universal motif in folk literature appears to be that of the "trickster," and these tales are told among the Azande as well. To a large extent the tales serve to assert and affirm social rules. They provide examples of the consequences one can expect if moral dictates are not observed. They are always told for the benefit of children, to supplement didactic social training. They are designed to appeal to a young audience (although they often contain very adult themes, and are very much enjoyed by adults) by featuring a main character who possesses a child's curiosity and temptation to break the rules. Demonstrated in the behavior of the trickster are a child's propensity for imitation, the ramifications of overlooking part of a ritual, the dangers inherent in exhibiting behaviors or assuming a role in society which are inappropriate.

Although there are many groups of trickster tales told among the Azande, the best known concern the adventures of a character named Ture. The stories, and ends in describing his great success or dismal failure. His wants are generally basics; he is often in pursuit of food, such as meat, termites, porridge, mushrooms, and honey, the items most desirable in a Zande diet. Ture's rashness often leads him to situations in which he must find a way to prevent his own death, often while in the form of a bird or animal. In many tales he is intrigued by either fire or water, sometimes regarded as necessities, sometimes as playthings. Despite his need for everyday goods, he often pursues items of pure luxury: "salt to improve the taste of his food, a barkcloth which turns harmoniously as the wearer moves, and a means of opening termite mounds to provide him with a home instead of building huts." (Street 1972:83) Ture often shows poor judgment and questionable values, striving for something only because it is novel, or belongs to someone else, rather than because it is of any use to him. Thus, when he learns that someone possesses the ability to remove his own intestines and clean them, he wants only to be able to learn to do the same; when he obtains a secret formula for putting out fires, he sets his own house ablaze just so he can extinguish it. As the latter example suggests, oftentimes Ture will create ends just for the ability to use the means. (Street 1972)

Once Ture has chosen a goal, he begins to set his strategy for its achievement. However, his strategies tend to ignore all social convention. He usually

uses trickery or deception to get what he wants. However, his attempts to use others to satisfy his own needs usually end in failure.

Often Ture tries to use magical spells or rituals that are not his to use. Because he is not the rightful owner of the magic or ceremony, he is unable to obtain the results he seeks. (One is reminded of the troubles encountered by the "sorcerer's apprentice," who borrows his master's hat and attempts to perform his chores with magical assistance, only to be overwhelmed by the power he has unwittingly unleashed.)

For example, Ture overhears a discussion about how two sons found success in hunting after cutting off their dying father's toe. In his eagerness to try this formula for hunting success, Ture murders his father, buries the toe he has severed, and goes out to hunt. To his surprise, he catches very few animals, and most of his companions are killed during the effort. The formula, it turns out, is only effective when the toe is offered willingly.

In other instances, the formula backfires because it is in the wrong hands: Ture has obtained it under false pretenses, and he was not meant to have it. While Ture may overhear a strategy for success, or may be given the tool to implement a strategy, he often has to resort to trickery to get the desired secret or magic.

Although tales end with particular lessons—Don't attempt another's behavior without that person's skill, If you are greedy, your acquisitions will be too much to handle—the Zande tales are more than merely moral examples. They employ themes common to many peoples. Evans-Pritchard suggests that the tales "represent deeper psychological forces present in us all, those elements which we would like to give rein to but cannot because of the rules of society." (Street 1972:86)

The tales also endeavor to teach flexibility, since rules are not always functional in every situation. To instill the message that sometimes rules must be broken, Ture the trickster elaborates the middle ground between order and chaos, and moderation in the application of convention. Classically, trickster tales describe a society's boundaries and rules and assert its unique identity. If viewed from this perspective, the Zande tales help us to understand their society as well as some broader tenets of human nature.

Witchcraft

The Azande are perhaps better known for their pervasive belief in witchcraft than for any other aspect of their culture. However, in his classic description of witchcraft among the Azande, Evans-Pritchard asks the reader to be aware "that the Zande cannot analyze his doctrines as I have done for him. . . . It is no use saying to a Zande 'Now tell me what you Azande think about witchcraft' because the subject is too general and indeterminate . . . to be described concisely. But it is possible to extract the principles of their thought from dozens of situations in which witchcraft is called upon to explain happenings. . . . Their philosophy is explicit, but it is not formally stated as a doctrine." (1937:70) [In such situations, an anthropologist endeavors to construct

that would
looking for
convincingly
ng as found
in worship.
that is per-
pic of theol-
ored by the
out him."
trickster," and
e tales serve
consequences
s told for the
e designed to
dult themes,
ter who pos-
strated in the
ramifications
behaviors or
the Azande,
e. The stories
at he is after,
nts are gener-
es, porridge,
find a way to
In many tales
ssites, some-
often pursues
kloth which
ening termite
street 1972:83)
, striving for
, rather than
one possesses
nts only to be
or putting out
As the latter
ility to use the
or its achieve-
m. He usually

such a "doctrine" through fieldwork. The resulting product may look quite dissimilar from the indigenous view. (Barrett 1991)]

Witchcraft is thought to be an actual physical property residing inside some individuals, who may themselves be unaware of their power. It is inherited, passed from father to son and mother to daughter. Azande believe that if the soul of the father is more powerful, the child conceived will be a boy; if the mother's soul substance is greater, their child will be a girl. Thus, although every child is a product of both parents, each also has more of one particular parent's soul. And if that parent is a witch, inheriting this inherent power to do harm is inevitable. Because this property is organic, it grows as a person grows. Therefore an older witch is a more dangerous witch. Children, whose witchcraft substance is small, are never accused of major acts of harm (such as murder). They can, however, cause minor misfortunes for other children.

Unlike sorcery, which employs charms and spells, witchcraft is deployed by sheer willpower. Witches send the spirit of their own witchcraft entity to eat the flesh and organs of their intended victims. Thus a witch may be at home asleep at the time illness or injury occurs. It is the "soul of the witchcraft" that travels through the night. This substance cannot travel great distances, however, and it is for this reason that the Azande feel more secure if they are able to live at a distance from their neighbors. The "short-range" nature of witchcraft allows the perpetrator to be more accurately identified; all those beyond the limits of a witch's capabilities, even with evil intent, may be eliminated. If a person is taken ill while traveling, it is in that location where illness struck in which the witch must be found.

The Azande believe that witchcraft is at the base of all misfortune, great or small. If a potter opens his kiln only to discover his pottery cracked, he intimates witchcraft; if a child stubs her toe at play, she suspects witchcraft; if a hunter is gored by an elephant, he lays blame for the injury squarely on a witch. Azande entertain no concept of "accidental" death. People die only as victims of murder, whether committed by witches or by the magic of revenge reserved for retaliation against suspected witches.

Despite these convictions, the Azande do not live in constant terror of Pritchard's assessment of the Azande was that they were the happiest and most carefree peoples of the Sudan. "The feelings of an Azande man, on finding that he has been bewitched, are not terror, but hearty indignation as one of us might feel on finding himself the victim of embezzlement." (Douglas 1980:1)

Since a witch's motivation is not random, but rather envy or hatred directed at a specific person, a victim searches for a suspect among those with whom he has argued, or in a person who may have cause to be jealous of him. How then can he identify his aggressor? For this, and other purposes, the Azande consult a variety of oracles.

Oracles

The Azande consult oracles regarding a wide range of things about which they need information. They ask for guidance in planning a marriage, taking a jour-

ney, building a house, organizing a raid. In addition to whatever their current misfortune may be, they inquire about whether their health will be endangered in the future.

In pre-European times, Zande chiefs consulted oracles to confirm their military decisions, but chiefs were also charged with judicial duties. Every accusation was brought before the chief to adjudicate. To this end, he employed several people whose responsibility it was to assist in the consultation of oracles. It has been said that the Azande belief in witchcraft is the supporting framework of their entire judicial system. (Mair 1974:221)

An oracle is a device for revelation. Among the Azande there are many from which to choose, with varying reputations for reliability. By far the most powerful is *benge*, the poison oracle, used by men alone. Its decisions are relied upon without question, and no undertaking of great import is attempted without its authorization. In attempting to convey its centrality, an Azande informant of Evans-Pritchard drew the analogy between the books of Europeans and the poison oracle of his own people. All the knowledge, guidance, memory and truth that are derived from trusted Western writings reside for the Azande within the poison oracle. Evans-Pritchard came to view it as less a ritual than a necessity:

For how can a Zande do without his poison oracle? His life would be of little worth. Witches would make his wife and children sick and would destroy his crops and render his hunting useless. Every endeavour would be frustrated, every labour and pain would be to no purpose. At any moment a witch might kill him and he could do nothing to protect himself and his family. Men would violate his wife and steal his goods, and how would he be able to identify and avenge himself on adulterer and thief? Without the aid of his poison oracle he knows that he is helpless and at the mercy of every evil person. It is his guide and counsellor. (1937:262-3)

Despite this seeming indispensability, later ethnographers have pointed out that *benge* poison, expensive and difficult to obtain, was most likely an oracle available regularly only to men of wealth. This limitation may have acted both to engender social obligations and to grant power and prestige. A man who cannot afford the costly poison, or who does not possess the proper chicken to which the poison must be administered, asks a wealthier kinsman, or deputy of the chief, to consult the oracle on his behalf. It is his duty to oblige. It is older men who are likely to have the means to seek counsel from the oracle: this access to information gives them power over younger men. They not only can ask the oracles about the intentions and behaviors of their juniors; but also are always supported in their decisions by the considerable weight of oracular authority, to which younger or poorer men have no direct access, and so cannot challenge. (Evans-Pritchard 1937)

The *benge* poison ordeal is an elaborate procedure, requiring great skill and finesse in both the administration of the poison and the posing of the questions. Poison is administered, by an expert in the task, to a small chicken. The expert must know how much poison is necessary, how much time should elapse between doses, whether it should be shaken to distribute

ok quite dis-

inside some is inherited, that if the soul the mother's every child is a it's soul. And s inevitable. Therefore an substance is (r). They can,

it is deployed it entity to eat y be at home witchcraft" that stances, how- they are able- ture of witch- those beyond eliminated. If ness struck in

fortune, great or acked, he inti- witchcraft; if a rely on a witch. die only as vic- igic of revenge

stant terror of is that Evans- priest and most on finding that one of us might 1980:1)

envy or hatred among those with e jealous of him. r purposes, the

about which they ge, taking a jour-

the poison, how long and firmly the chicken should be held, and in what position. Each barely perceptible movement made by the bird is significant to the trained eye.

Once the poison has been administered, the order in which questions are asked, whether they are phrased in a positive or negative frame, must all be determined by the questioner. The oracle is addressed as if it were a person. Every detail of the situation in question is explained, and each individual question may be embedded in five or ten minutes of speech. The *benge* poison shows its answer by responding through the chicken to the question, "If this is true, *benge* kill the fowl" or "If this is not the truth, *benge* spare the fowl." Each answer is then tested by repeating the truth in saying. . . . " (Mair 1974)

An oracle more readily available to all is the termite oracle. This is used as often by women as men, and even children may participate. Two branches are cut, each from a different tree. They are inserted together into a termite mound and left overnight. The answer is indicated by which branch has been eaten. Though certainly less elaborate and costly than the *benge* oracle, consulting termite and one must wait all night long for the answer.

Least reliable but most convenient is the rubbing-board oracle, a device resembling a Ouija board, made of two small pieces of wood, easily carried with a handle, and is rubbed across the top of a second piece, fashioned with legs to stand on. Questions are asked as the wood is moved, as it sticks or catches, so the answer is revealed.

Accusing a Witch

There are two distinct sorts of accusations of witchcraft: one in which illness or misfortune has occurred, the other after someone has died. These differ in both the function of accusing an individual, and the ramifications of being found guilty.

The aim of accusing a person of witchcraft in the former situation is to bring about some resolution to the conflict that induced the attack, and to return the relationship to equilibrium. Speaking ill of a person, or even wishing someone injury, is ineffectual without a social tie: the curse of a stranger cannot do harm. Thus, a relationship with the accused is a prerequisite for bewitchment. (An individual must be suspected, or else his or her name could not have been presented to the oracle for confirmation or denial of guilt.)

When the chicken dies during the *benge* poison ordeal, a wing is cut off, placed on a stick, and brought to the local deputy of the chief, telling him the name of the individual confirmed by the *benge*. A messenger, sent with the wing to the alleged witch, places it on the ground, and announces that *benge* has been consulted regarding the illness of the accuser. Usually this charge is met with denial of any ill intent. At the very least the accused pleads ignorance of harm derived from his or her own *mangu*, or witchcraft substance. As a demonstra-

tion of good faith, the alleged witch takes a mouthful of water, and sprays it over the wing. So doing, she or he beseeches the mangú to become inactive, allowing the victim to recover. The messenger reports these events to the chief's deputy.

In the event of a "murder," the aim is not pacification but revenge. Restoring amicable relations is clearly not possible; a postmortem accusation is an indictment leading to heavy compensation, sometimes paid with the witch's own life. Exacting such a toll permanently alters the relationship between the kin group of the victim and that of the accused. (McLeod 1972)

Witchcraft in Its Social Setting

The Azande chiefdom is formally structured in a clear-cut hierarchy, from the chiefs at the top through their deputies, armies, local governors, and ending with individual householders. Built into this structure is the elimination of most opportunities for unequal competition: that is, chiefly lineages did not compete with those lesser, nor did the rich with the poor, or parents with their children. As Douglas (1980) has observed, accusations of witchcraft arise only in those social situations that fall outside of the political structure. Thus, co-wives might accuse each other, as might rivals in other arenas. Because witches could be unintentionally dangerous, their mangú could be set into motion by understandable resentments and jealousies. The accusation and eventual demonstration of remorse will set these ill-feelings to rights. Events that can be explained by an individual's lack of technical skill (such as the shoddy work of an inexperienced carpenter) or by personally motivated actions are not likely to be involved in the realm of witchcraft. As Parsons (1969:195) observes, one can imagine many motivations for people to claim that witchcraft was at the root of their adultery, but this would result in ridicule, "because everybody knows witches don't do that."

Witchcraft beliefs can function effectively as a way of managing the anxiety resulting from random misfortune. This is evidenced by the prominence given to illness and death as occasions for witchcraft accusations.

Witchcraft as Social Control and Leveling Mechanism

Witchcraft may serve as an effective agent of social control. The lengthy process involved in making an accusation acts to forestall hasty and emotional confrontations. Charges must have group support behind them and are not leveled carelessly. An individual's behavior can be guided by the knowledge that wrongdoing might likely result in retaliatory witchcraft. Additionally, cognizance that jealous or hostile behavior might place one in a position of being suspect should misfortune occur might lead one to be quite circumspect. Wishing to be neither suspect nor victim, the Azande possess, in witchcraft, both an effective sanction against socially disruptive behavior and a vehicle for handling hostility.

what significant persons are all be person. lques- shows s true, Each d with) used as nes are ound eaten. ng ter- ed at a device ried to with a legs to hes, so ness or in both found n is to and to vishing cannot witch- ct have cut off, um the e wing as been et with of harm onstra-

Because an individual with great wealth is likely to engender the jealousy of others and the attendant bewitchment, Azande are not likely to attempt to outproduce one another. It is in this way that witchcraft acts as a leveling mechanism, indirectly keeping wealth balanced.

The "Logic" of Azande Witchcraft

The attribution of the cause of all misfortune to witchcraft may seem extreme. In fact, Evans-Pritchard himself engaged in lively debate with informants who described as witchcraft events that seemed to him the result of entirely "natural" phenomena. He eventually recognized that they did, in fact, have a very clear understanding about the contribution of the natural world to their misfortune. When Evans-Pritchard suggested to a boy, whose foot had been injured when he tripped over a tree stump, that a witch could not possibly have placed the tree stump in his way, the boy agreed. He recognized that nature had contributed the tree stump and, further, that the tree stump had cut his foot. His evidence of witchcraft was simply that despite his vigilance in watching out for tree stumps, as well as his safe passage on that same path hundreds of other times, *this time* he had been injured. This time, there was witchcraft.

Along these same lines, when a granary collapsed, injuring several people who had been sitting in its shade, Azande saw no contradiction in their dual assertions that termites had eaten at the legs of the building, resulting in its collapse, and that witchcraft was responsible. They further admitted that no witch had "sent" the people underneath the granary in order to trap them: it was afternoon, and they were merely seeking shade. While we would call this series of events coincidence, or perhaps "being in the wrong place at the wrong time," Azande are able to form an explanatory link between these events. That link is provided by witchcraft.

During his stay in the Sudan, Evans-Pritchard witnessed the suicide of a man who was angry with his brothers. Although his despair over his conflict was well known, and when his body was found hanging from a tree, all readily acknowledged that he had, in fact, hanged himself, the cause of death was considered witchcraft. At Evans-Pritchard's behest, an Azande friend explained:

... only crazy people commit suicide; if everyone who was angry with his brothers committed suicide there would soon be no people left in the world; if this man had not been bewitched he would not have done what he did do. (1937:71)

Once the supernatural premise that people have witchcraft substance in them and can harm others with it is granted, the Azande argument becomes logical. These beliefs concerning witchcraft endure today, with some modifications. Resettlement has forced them to accept living in closer quarters, depending upon screens to keep them out of their neighbors' view, if not their reach. When asked about fears concerning the proximity of witches, the Azande report that they feel able to relocate should misfortune occur. This would remove them from any nearby threat.

European Development among the Azande

In recent years there has been widespread resettlement of the Zande people, as well as encouragement to participate in agriculture and industry profitable to European administrators (chiefly cotton production). Planners believed they could improve the lot of the Azande, who, it was thought, would be grateful for the introduction of more "modern" comforts and luxuries. The introduction of money and wage labor acted to weaken kinship ties by obviating the need for kin to work together outside the household. Young men and women could more easily leave their parents' homes and set up their own households with income from wages paid by Europeans.

The most detrimental feature of the resettlement plan was the arbitrary assignment of individuals to plots of land. This action failed to take into account the Azande's desire for mobility and flexible living arrangements. Tensions were engendered among resettled people that were counterproductive to the developers' wishes to create, through resettlement, a stable workforce.

Reining (1966), in his assessment of an Azande development project to bring the cotton industry to the Azande region of the Sudan, concludes that it "proved that it is possible to establish an industrial community in the center of Africa, if cost is no object, and that the Azande could adjust . . . and produce large amounts of cotton when interested in doing so. But [it] also proved that many things cannot be done. Some of its weaknesses—especially those in ecology, social organization, and communication—will be found . . . in other widespread attempts at economic aid and community development." (p. 231)

For Further Discussion

Witchcraft among the Azande traditionally served as an effective means of social control. What are the major institutions and beliefs in your own culture which function similarly? Think about the ways in which members of your society are compelled to behave in socially acceptable ways. How do these differ from one another? There is a "logic" to the Azande belief in witchcraft and the causality of misfortune. Do you employ logic that is similar or different, when explaining negative events? Are there several different "systems of logic" which may be invoked, depending upon the circumstances?

References

Barrett, R. A. *Culture and Conduct*. Belmont, N Y: Wadsworth, 1991.
Blackwood, E. *Breaking the Mirror: The Construction of Lesbianism and the Anthropological Discourse on Homosexuality in Culture and Human Sexuality*. D. N. Suggs and A. W. Miracle, eds. Pacific Grove CA: Brooks/Cole, 1993.
Douglas, M. *Purity and Danger*. London: Routledge & Kegan Paul, 1980.

ance in them
es logical.
odifications,
depending
ach. When
e report that
move them

with his
world; if
did do.
Explained:
th was con-
e, all readily
his conflict
suicide of a

That link is
rong time,"
ll this series
hem: it was
at no witch
ng in its col-
n their dual
veral people

ads of other
hing out for
his foot. His
nature had
possibly have
t had been
o their mis-
ave a very
irely "natu-
ants who
an extreme.

he jealousy
attempt to
ing mech-

Evans-Pritchard, E. E. *Witchcraft in, Oracles and Magic among the Azande*. Oxford: The Clarendon Press, 1937.

Evans-Pritchard, E. E. *Witchcraft amongst the Azande in Witchcraft and Sorcery*. M. Marwick, ed. Baltimore: Penguin Books, 1970 (original 1929).

Evans-Pritchard, E. E. *The Azande: History and Political Institutions*. Oxford: The Clarendon Press, 1971.

Mair, L. *African Societies*. Cambridge: Cambridge University Press, 1974.

McLeod, M. D. *Oracles and Accusations among the Azande*. in *Zande Themes*. A. Singer and B. V. Street. Oxford: Basil Blackwell, 1972.

Nanda, S. *Cultural Anthropology*. Belmont, N Y: Wadsworth, 1991.

Parsons, A. *Belief, Magic, and Anomie*. New York: The Free Press, 1969.

Reining, C. C. *The Zande Scheme: An Anthropological Case Study of Economic Development in Africa*. Evanston, IL: Northwestern University Press, 1966.

Street, B. V. *The Trickster Theme in Zande Themes*. A. Singer and B. V. Street, eds. Oxford: Basil Blackwell, 1972.