

The Hubble Redshift Distance Relation

Student Manual

A Manual to Accompany Software for
the Introductory Astronomy Lab Exercise
Document SM 3: Version 1.1.1



Department of Physics
Gettysburg College
Gettysburg, PA

Telephone: (717) 337-6019
Email: clea@gettysburg.edu



*Contemporary Laboratory
Experiences in Astronomy*

Contents

Goal	3
Objectives	3
Equipment	4
Introduction	4
Technique	5
Using the Hubble Redshift Program.....	5
Calculating the Hubble Parameter	10
Determining the Age of the Universe	12
Data Sheet	14

Goal

You should be able to find the relationship between the redshift in spectra of distant galaxies and the rate of the expansion of the universe.

Objectives

If you learn to.....

Use a simulated spectrometer to acquire spectra and apparent magnitudes.

Determine distances using apparent and absolute magnitudes.

Measure Doppler shifted H & K lines to determine velocities.

You should be able to.....

Calculate the rate of expansion of the universe.

Calculate the age of the universe.

Equipment

You will need a scientific pocket calculator, graph paper, ruler, PC compatible computer running Windows 3.1 (VGA graphics) or better, and the CLEA Program *Hubble Redshift Distance Relation*. Share the use of the computer and program with your partner to collect data. All calculations and graphing, as well as your narratives, must be your own original work.

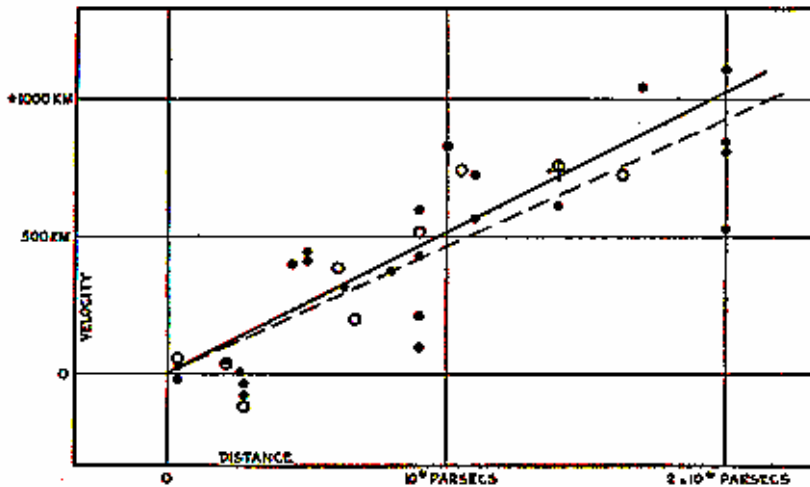
Introduction

The late biologist J.B.S. Haldane once wrote: “The universe is not only queerer than we suppose, but queerer than we can suppose.” One of the queerest things about the universe is that virtually all the galaxies in it (with the exception of a few nearby ones) are moving away from the Milky Way. This curious fact was first discovered in the early 20th century by astronomer Vesto Slipher, who noted that absorption lines in the spectra of most spiral galaxies had longer wavelengths (were “redder”) than those observed from stationary objects. Assuming that the redshift was caused by the Doppler shift, Slipher concluded that the red-shifted galaxies were all moving away from us.

In the 1920’s, Edwin Hubble measured the distances of the galaxies for the first time, and when he plotted these distances against the velocities for each galaxy he noted something even queerer: The further a galaxy was from the Milky Way, the faster it was moving away. Was there something special about our place in the universe that made us a center of cosmic repulsion?

Astrophysicists readily interpreted Hubble’s relation as evidence of a universal expansion. The distance between all galaxies in the universe was getting bigger with time, like the distance between raisins in a rising loaf of bread. An observer on *ANY* galaxy, not just our own, would see all the other galaxies traveling away, with the furthest galaxies traveling the fastest.

This was a remarkable discovery. The expansion is believed today to be a result of a “Big Bang” which occurred between 10 and 20 billion years ago, a date which we can calculate by making measurements like those of Hubble. The rate of expansion of the universe tells us how long it has been expanding. We determine the rate by plotting the velocities of galaxies against their distances, and determining the slope



of the graph, a number called the Hubble Parameter, H_0 , which tells us how fast a galaxy at a given distance is receding from us. So Hubble’s discovery of the correlation between velocity and distance is fundamental in reckoning the history of the universe.

Using modern techniques of digital astronomy, we will repeat Hubble’s experiment.

Figure 1: Hubble’s Constant

The technique we will use is fundamental to cosmological research these days. Even though Hubble’s first measurements were made three-quarters of a century ago, we have still only measured the velocities and distances of a small fraction of the galaxies we can see, and so we have only small amount of data on whether the rate of expansion is the same in all places and in all directions in the universe. The redshift distance relation thus continues to help us map the universe in space and time.

Technique

The software for the **CLEA Hubble Redshift Distance Relation** laboratory exercise puts you in control of a large optical telescope equipped with a TV camera and an electronic spectrometer. Using this equipment, you will determine the distance and velocity of several galaxies located in selected clusters around the sky. From these data you will plot a graph of velocity (the y-axis) versus distance (the x-axis).

How does the equipment work? The TV camera attached to the telescope allows you to see the galaxies, and “steer” the telescope so that light from a galaxy is focused into the slit of the spectrometer. You can then turn on the spectrometer, which will begin to collect photons from the galaxy. The screen will show the spectrum—a plot of the intensity of light collected versus wavelength. When a sufficient number of photons are collected, you will be able to see distinct spectral lines from the galaxy (the H and K lines of calcium), and you will measure their wavelength using the computer cursor. The wavelengths will be longer than the wavelengths of the H and K lines measured from a non-moving object (397.0 and 393.3 nanometers), because the galaxy is moving away. The spectrometer also measures the apparent magnitude of the galaxy from the rate at which it receives photons from the galaxy. So for each galaxy you will have recorded the wave-lengths of the H and K lines and the apparent magnitude.

From the data collected above, you can calculate both the speed of the galaxy from the Doppler-shift formula, and the distance of the galaxy by comparing its known absolute magnitude (assumed to be (-22) for a typical galaxy) to its apparent magnitude. The result is a velocity (in km/sec) and a distance (in mega parsecs, Mpc) for each galaxy. The galaxy clusters you will observe have been chosen to be at different distances from the Milky Way, giving you a suitable range to see the straight line relationship Hubble first determined. The slope of the straight line will give you the value of H_0 , the **Hubble Parameter**, which is a measure of the rate of expansion of the universe. Once you have H_0 , you can take its reciprocal to find the age of the universe.

The details of the measurements and calculations are described in the following sections.

Using the Hubble Redshift Program

Welcome to the observatory! We will simulate an evening’s observation during which we will collect data and draw conclusions on the rate of expansion of the universe. We will gain a proficiency in using the telescope to collect data by working together on the first object. Collecting data for the other four objects will be left to you to complete the evening’s observing session. Then you will analyze the data, draw your conclusions, and use the information to predict the age of the universe.

Let’s begin.

1. Open the Hubble Redshift program by double clicking on the **CLEA_hub icon**. Select **File...Log in** from the menu bar, and enter student names and the lab table number. Click **OK** when ready. The title screen appears.
2. Select **File...Run** from the menu bar to begin the exercise. The screen shows the control panel and view window as found in the “warm room” at the observatory.

The **Hubble Redshift Distance Relation** program simulates the operation of a computer-controlled spectrometer attached to a telescope at a large mountain-top observatory. It is realistic in appearance, and is designed to give you a “hands-on” approach of how astronomers collect and analyze data for research.

Notice that the **dome** is closed and **tracking status** is off. Before you can access the telescope controls, a message appears notifying you that you have control of the telescope. Click **OK** to continue.

3. To begin our evening's work, first open the dome by clicking on the **dome** button. The dome opens and the view we see is from the finder scope. The finder scope is mounted on the side of the main telescope and points in the same direction. Because the field of view of the finder scope is much larger than the field of view of the main instrument, it is used to *locate* the objects we want to measure. The field of view is displayed on-screen by a CCD camera attached on the finder scope. (Note that it is not necessary for astronomers to view objects through an eyepiece.) Locate the **Change View** button on the control panel and note its status, i.e. finder scope. Also note that the stars are drifting in the view window. This is due to the rotation of the earth and is very noticeable under high magnification of the finder telescope. It is even more noticeable in the main instrument which has even a higher magnification. In order to have the telescope keep an object centered in the spectrometer opening (slit) to collect data, we need to turn on the drive control motors on the telescope.

4. We do this by clicking on the **tracking** button. The telescope will now track in sync with the stars. However, before we can collect data we need to do the following:

- (a) Select a field of view (one is currently selected).
- (b) Select an object to study (one from each field of view).

5. To review the fields of study for tonight's observing session, select **Field...** from the menu bar at the top of the control panel. The items you see listed are the fields that contain the objects we have selected to study tonight. An astronomer would have selected these fields in advance of going to the telescope by:

- (a) Selecting the objects that will be well placed for observing during the time we will be at the telescope.
- (b) Looking up the RA and DEC of each object field in a catalog such as **Uranometria 2000**, **Norton's Atlas**, etc.

This list in the **select star field dialog box** contains 5 fields for study tonight. You will need to select one galaxy from **each** field of view and collect data with the spectrometer (a total of 5 galaxies).

To see how the telescope works, change the field of view to Ursa Major II at RA 11 hour 0 minutes and Dec. 56 degrees 48 min. Press **OK** to move the telescope to the correct position.

Notice the telescope "slews" (moves rapidly) to the RA and DEC coordinates we have selected. The view window will show a portion of the sky that was electronically captured by the charge coupled device (CCD) camera attached to the telescope.

The view window has two magnifications (see Figure 2 on next page):

Finder View is the view through the finder scope that gives a wide field of view and has a red square which outlines the instrument field of view.

Instrument View is the view from the main telescope with red vertical lines that show the position of the slit of the spectrometer.

As in any image of the night sky, stars and galaxies are visible in the view window. It is easy to recognize bright galaxies in this lab simulation, since the shapes of the brighter galaxies are clearly different from the dot-like images of stars. But faint, distant galaxies can look similar to like stars, since we can't see their shape.

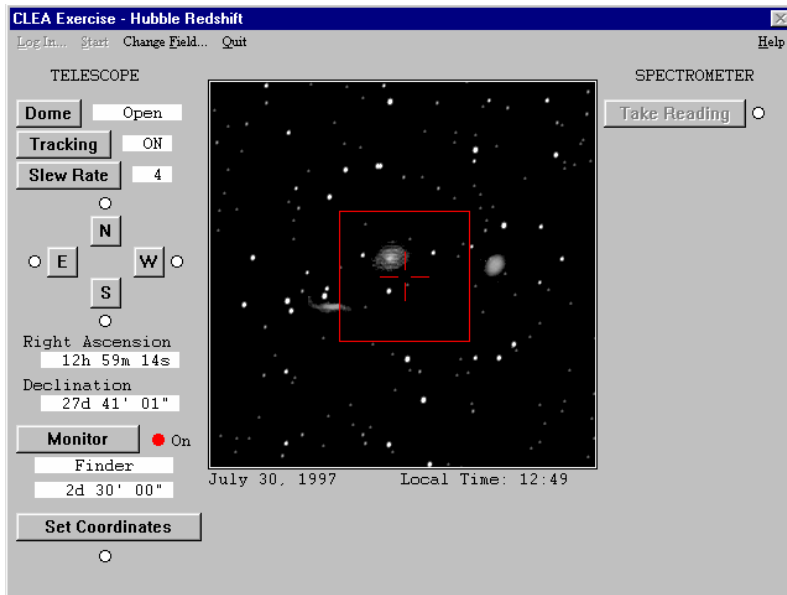


Figure 2:
Field of View from the
Finder Scope

6. Now change fields by clicking on Ursa Major I in the lists of selected galaxies to highlight the field. Then click the **OK** button.

7. Locate the **Change View** button in the lower left hand portion of the screen. **Click** on this button to change the view from the **Finder Scope** to the **Instrument**. The field of view is now smaller so that you can accurately position the galaxy in the slit of the spectrometer. Use the directional buttons (**N, S, E or W**), to “slew”, or move, the telescope to carefully position, in the slit, the object you intend to use to collect data—any of the galaxies are suitable. To move continuously, **press and hold down** the left mouse button. Notice the red light comes on to indicate the telescope is “slewing” in that direction.

As in real observatories, it takes a bit of practice to move the telescope to an object. You can adjust the speed or “slew rate” of the telescope by using the mouse to press the **slew rate** button. (1 is the slowest and 16 is the fastest). When you have positioned the galaxy accurately in the slit, click on the **take reading** button to the right of the view screen.

The more light you get into your spectrometer, the stronger the signal it will detect, and the shorter the time required to get a usable spectrum. Try to position the spectrometer slit on the brightest portion of the galaxy. If you position it on the fainter parts of the galaxy, you are still able to obtain a good spectrum but the time required will be much longer. If you position the slit completely off the galaxy, you will just get a spectrum of the sky, which will be mostly random noise.

As we collect data from the object. We will be looking at the spectrum from the galaxy in the slit of the spectrometer. The spectrum of the galaxy will exhibit the characteristic H & K calcium lines which would normally appear at wavelengths 3968.5 Å and 3933.7 Å, respectively, if the galaxies were not moving. However, the H & K lines will be red shifted to longer wavelengths depending on how fast the galaxy is receding.

Photons are collected one by one. We must collect a sufficient number of photons to allow identification of the wavelength. Since an incoming photon could be of any wavelength, we need to integrate for some time before we can accurately measure the spectrum and draw conclusions. The more photons collected, the less the noise in the spectrum, making the absorption lines easier to pick out. To initiate the data collection, press **start/resume count**.

8. To check the progress of the spectrum, click the **stop count** button. The computer will plot the spectrum with the available data. Clicking the **stop count** button also places the cursor in the measurement mode. Using the mouse, place the arrow anywhere on the spectrum, press and hold the left mouse button. Notice the arrow changes to a cross hair and the wavelength data appears at the top of the display. As you hold the left mouse button, move the mouse along the spectrum. You are able to measure the wavelength and intensity at the position of the mouse pointer.

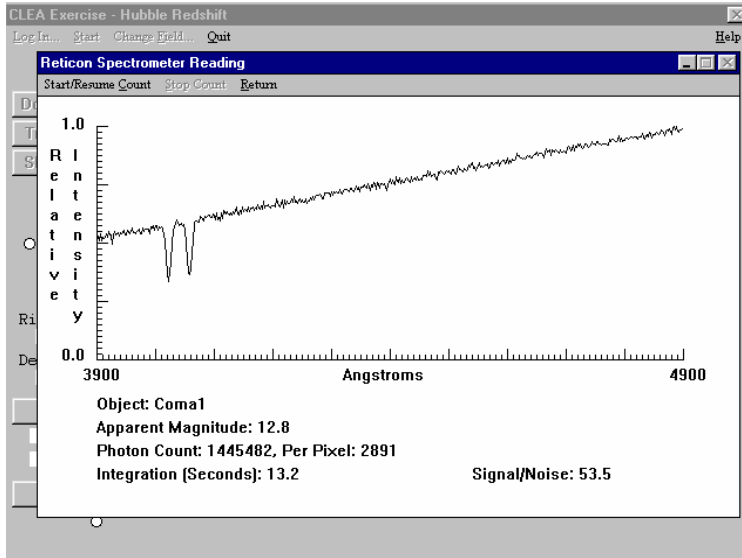


Figure 3:
Spectrometer Reading Window

Information that appears in the lower left hand portion of the window

Object: the name of the object being studied

Apparent magnitude: the visual magnitude of the object

Right Ascension: Displays the celestial coordinates of the center of the field of view. Right Ascension is displayed in hours, minutes and seconds.

Declination: Declination is displayed in degrees, minutes and seconds.

Information that appears in the lower right hand portion of the window

Integration (seconds): The number of seconds it took to collect data

Photon count: The total number of photons collected so far, and the average number per pixel

Avg. per Channel: The number of photons averaged from the total number of the channels of the spectrometer.

Signal-to-noise Ratio: A measurement of the quality of the data taken to distinguish the H and K lines of calcium from the noise. Try to get a signal-to-noise ratio of 10 to 1. For faint galaxies, this may take some time.

Information that appears in the top portion of the window

Wavelength (angstroms): Wavelength as read by the cursor in the measurement mode

Intensity: Relative intensity of light from the galaxy at the position marked by the cursor in the measurement mode

9. Click **start/resume count** from the menu bar in the Spectrometer Reading Window. Continue to collect photons until a *clear* spectrum of the H & K lines of calcium is displayed. These lines are approximately 40 Å apart. They should stand out from the noise. If not, continue to count photons. If you are not sure about the data, check with a lab instructor to help you interpret the data. Additional information is needed to complete the analysis of the information that is not displayed in the spectrometer reading window. They are the following:

- The absolute magnitude (M) for all galaxies in this experiment
- The laboratory wavelength of the K line of calcium is 3933.7 Å.
- The laboratory wavelength of the H line of calcium is 3968.5 Å.

10. Record the object, photon count, apparent magnitude, and the measured wavelength of the H & K lines of calcium on the data sheet located at the end of this exercise. The H & K lines measured should be red shifted from the laboratory values depending on the galaxies motion.

11. The other option is to record your data electronically and save it to a file to be imported by an available spreadsheet application. The procedure begins when you stop the counting process. Select **Record Meas.** from the spectrometer menu. Position the dialog box that appears so that the measurement boxes for the Ca H & K lines are visible, as well as the upper part of the spectrometer display, including the lines themselves.

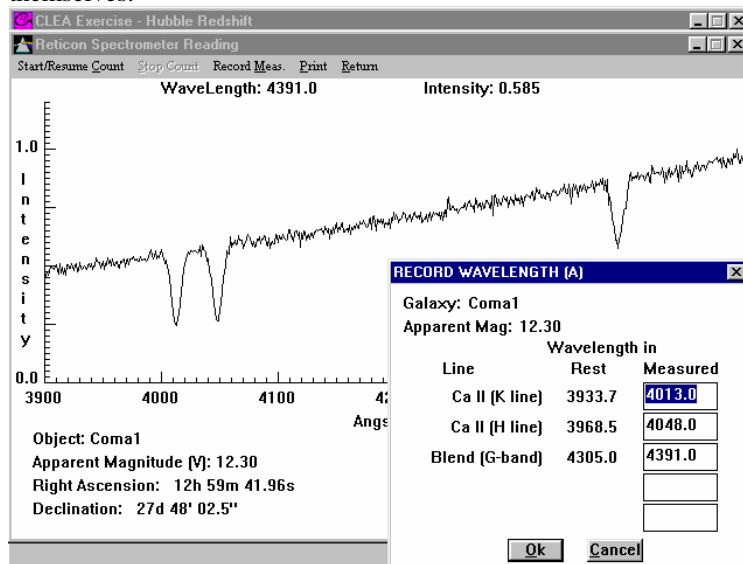


Figure 4 :
The Record Wavelength Window

Measure the position of each line as follows by placing the cursor on the visible part of the spectrum display and pressing and holding the left mouse button. The cursor will change from the arrow to a crosshair. Note that displays labeled **WaveLength** and **Intensity** now appear at the top of the display.

Drag the cursor until the vertical crosshair is centered (as accurately as you can) in a spectral line, and release the button. The wavelength of the line center will now appear at the top of the display. (The Intensity readout refers to the position of the horizontal crosshair, and is not used in this exercise - you may position the horizontal crosshair anywhere that permits you to accurately position the vertical crosshair on the line center.) If there is too much noise in the spectrum for you to accurately determine the line center you will have to go back and integrate the spectrum to a higher signal-to-noise ratio. You can minimize or cancel the **Record Wavelength** dialog box while you do this, or just move it out of the way.

When you have centered the vertical crosshair, release the mouse button and move the cursor to the appropriate box on the **Record Wavelength** dialog box. Remember that the K line is always a shorter wavelength (to the left on the spectrum display). Click the mouse button once (in the measurement box) and then *type* the measured wavelength in the box.

Return the cursor to the spectrometer display and repeat the process for the H Line.

NOTE: At higher radial velocities the spectral features at longer wavelengths may be redshifted out of the recorded spectral range. Measure only those lines for which you can accurately determine the line center.

When you have finished recording the line measurements, you may return to the telescope window and move to the next galaxy.

12. At this point, you must save your data to a file in order to use the spreadsheet program. Select **File...Data...Save** from the main menu. The software creates a file name for the saved data (from the first login name and the qualifier .csv) and asks you to verify or change it. If the file name you verify or provide already exists, you are given the option of overwriting the existing file or providing a different file name.

The saved data is written in text form, one record per line, with commas separating the values (comma delimited text). This format can be read and parsed into individual columns by most spreadsheet programs. Header information and column titles are also written in this file as string fields and will appear on a resulting spreadsheet.

13. To collect data for additional galaxies, press **Return**. Change the Monitor to display **Finder**, then follow steps 6 through 12.

Calculating the Hubble Parameter

Now that we see how to use our instrument to collect data, we can use this information to determine for each galaxy, its distance and its velocity, using the following relationships:

$$(A) \quad M = m + 5 - 5 * \log D$$

or

$$\log D = \frac{m - M + 5}{5}$$

Note that we measure m and assume a value for M in order to calculate D (distance), where D is in parsecs.

$$(B) \quad v_H = c * \frac{\Delta\lambda_H}{\lambda_H} \quad \text{and} \quad v_K = c * \frac{\Delta\lambda_K}{\lambda_K}$$

Note that we measure λ (wavelength) in order to calculate v .

$$(C) \quad \Delta\lambda_H = \lambda_{H \text{ measured}} - \lambda_H \quad \text{and} \quad \Delta\lambda_K = \lambda_{K \text{ measured}} - \lambda_K$$

1. Using the computer simulated telescope, measure and record on your data sheet the wavelengths of the calcium H and K lines for *one* galaxy in *each* of the fields selected for the evenings observation. Also, be sure to record the object name, apparent magnitude, and photon count. Round off numbers to two decimal places. Collect enough photons (usually around 40,000) to determine the wavelength of the line accurately.

2. Use your measured magnitudes and the assumed absolute magnitude for each galaxy and derive the distance, D , to each galaxy using equation (A). Express your answer in both parsecs and mega parsecs in the appropriate places on your data table. Note that equation (A) tells you how to find the log of the distance.

To find the distance, D , you must take the anti log, i.e.

$$D = 10^{\log D}$$

If your calculator cannot calculate powers of 10, please ask to use your instructor's calculator.

3. Use your measured wavelengths to calculate the redshifts for each line, $\Delta\lambda_H$ and $\Delta\lambda_K$. Record each on your data table.

4. Use the Doppler shift formula, to determine the velocities as determined by both the H and K lines. There is a place on the data table for each of these figures:

$$v_H = c * \frac{\Delta\lambda_H}{\lambda_H} \quad \text{and} \quad v_K = c * \frac{\Delta\lambda_K}{\lambda_K}$$

5. Calculate and record the velocity of the galaxy. It is the average of the velocities determined from the H and K lines.

6. Now plot a Hubble diagram by graphing the velocity of a galaxy in km/sec (y-axis) vs. the distance in mega parsecs (x-axis) on a sheet of graph paper. Draw a straight line through the origin that best fits all the data points. The slope of the line is the Hubble Parameter (H). To calculate the slope of the line, measure a value of D and v from a point near the **upper right** end of the line you drew (do not use one of the points that you plotted, just use a data point). Determine H using the following equation:

$$(D) \quad H = \frac{v}{D}$$

where H is the Hubble Parameter in km/sec/Mpc

v is the velocity measured from your line

D is the distance measured from your line

a) Record your value for the Hubble Parameter on your data table on the line called the **Average Value of H**.

b) Mark the point you used on your graph

c) Label the axis of your graph, and give it a meaningful title.

Determining the Age of the Universe

The Hubble Law, equation (D), can be used to determine the age of the universe. Using *your* average value of H, calculate the recessional velocity of a galaxy which is 800 Mpc away.

Velocity of a galaxy 800 Mpc away: _____ km/sec

Verify your velocity by looking it up on your Hubble diagram. You now have two important pieces of information:

1. How far away is the galaxy.
2. How fast it is moving away from us.

You can visualize the process if you think about a trip in your car. If you tell a friend that you are 120 miles away from your starting point and that you traveled 60 miles per hour, your friend would know you had been traveling TWO hours. That is your trip started two hours ago. You know this from the relationship:

Distance equals Rate (or velocity) * Time

which we can write as

$$(E) \quad \mathbf{D = R * T} \quad \text{or} \quad \mathbf{T = \frac{D}{R}}$$

Thus,
$$2 \text{ hrs} = \frac{120 \text{ mi}}{60 \text{ mi / hr}}$$

Now let's determine when the universe "started its trip". The distance is 800 Mpc, but first convert Mpc into km because the rate, or velocity, is in km/sec.

800 Mpc = _____ km

Use equation (E) to determine how many seconds ago the universe started:
_____secs

There are about 3.15×10^7 seconds in one year. Convert your answer into years:

_____ years

The age of the universe is _____ years.

SHOW MATH HERE IN AN ORGANIZED FASHION.

Galaxy Field Name	Abs Mag M	Photon Count	App Mag m	Dist in pc	Dist in Mpc	$\lambda_{\text{measured}}$ K Line	$\lambda_{\text{measured}}$ H Line	$\Delta\lambda_H$	$\Delta\lambda_K$	Velocity H	Velocity K	Velocity AVG
	-22											
	-22											
	-22											
	-22											
	-22											

Using the Graph: Average Value of H = _____ km/sec/Mpc

Useful Equations and Quantities

$$M = m + 5 - 5 * \log D$$

$$v_K = c * \frac{\Delta\lambda_K}{\lambda_K}$$

$$1 \text{ light year} = .306 \text{ pc}$$

$$\log D = \frac{m - M + 5}{5}$$

$$\Delta\lambda_H = \lambda_{H \text{ measured}} - \lambda_H$$

$$1 \text{ MPC} = 1 \times 10^6 \text{ pc}$$

$$v_H = c * \frac{\Delta\lambda_H}{\lambda_H}$$

$$\Delta\lambda_K = \lambda_{K \text{ measured}} - \lambda_K$$

$$1 \text{ pc} = 3.26 \text{ light years}$$

Wavelength of K Line:

$$\lambda_K = 3968.47$$

Wavelength of H Line:

$$\lambda_H = 3968.47$$

$$c = 3 \times 10^5 \text{ km/sec}$$